

- 1 BEDROOM
- 1 BATHROOM

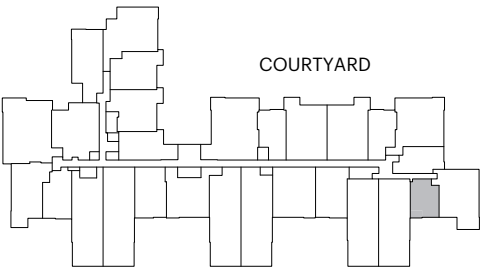
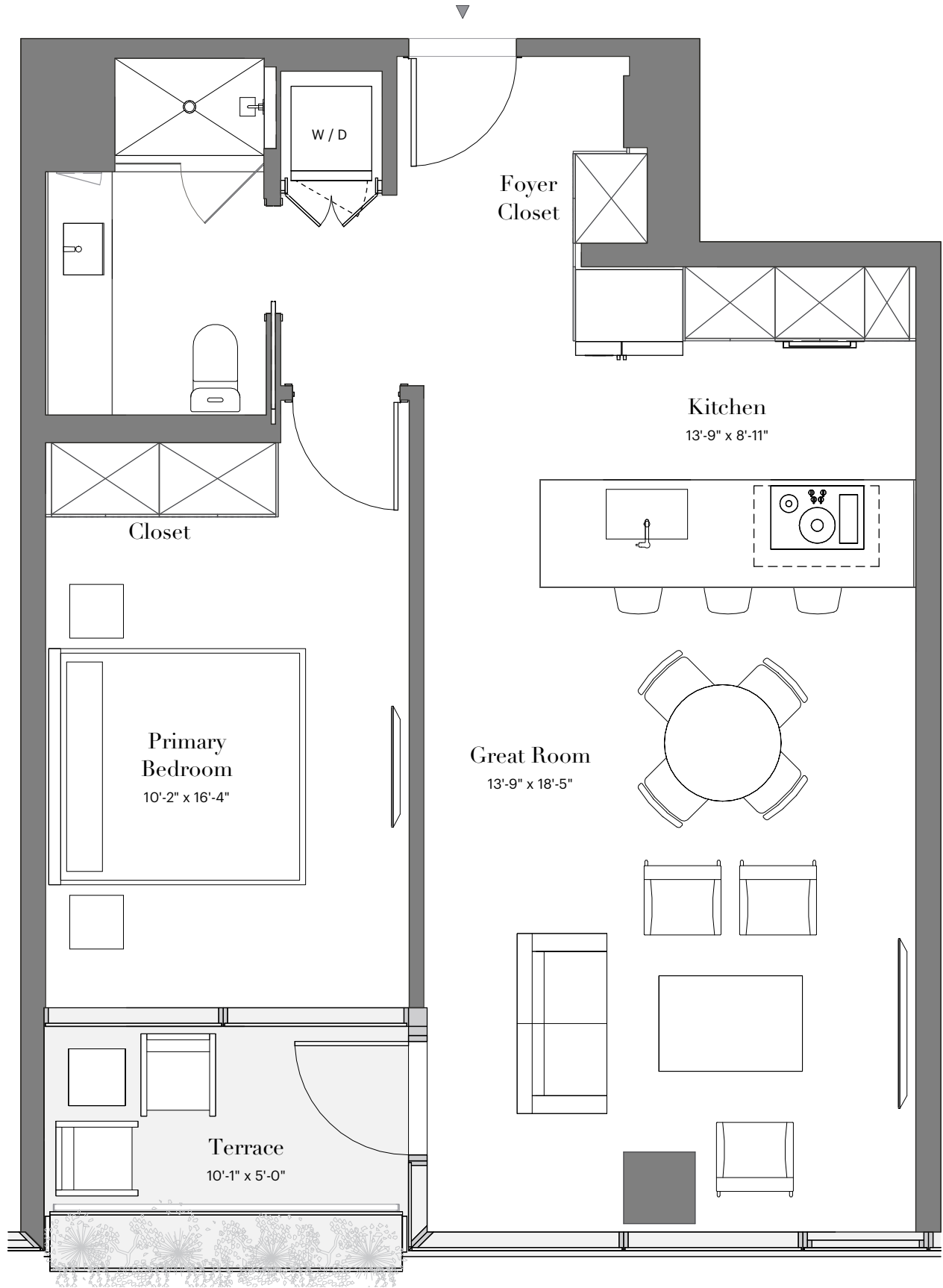
RESIDENTIAL AREA  
+/- 729 SF

OUTDOOR AREA  
+/- 68 SF



WARNING: THE CALIFORNIA DEPARTMENT OF REAL ESTATE HAS NOT INSPECTED, EXAMINED OR QUALIFIED THIS OFFERING.

All descriptions, depictions, and renderings are provided solely for illustrative purposes and are subject to change and should not be relied upon to confirm applicable features. All sales are subject to receipt and acceptance of the ADRE Public Report. All information including pricing, building and floor plan design, features, amenities, standards, and options are subject to change without notice. Dimensions are approximate and may vary due in part to construction variances and tolerances. Outdoor area includes planter(s). Polaris Pacific of Arizona, Inc ADRE# CO662390000. Optima Realty, Inc. ADRE# CO548458000.



EAST MAYO BOULEVARD