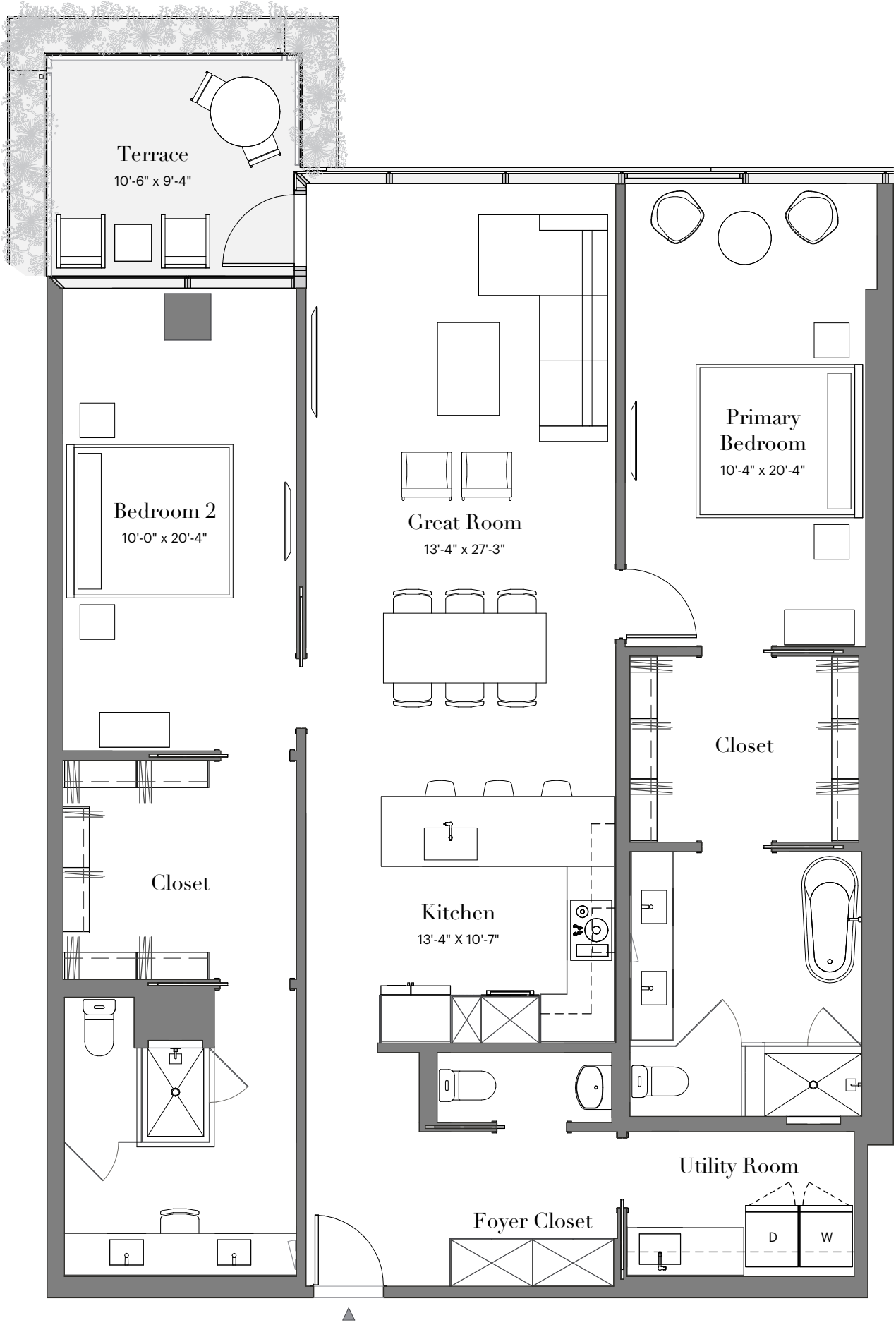




All descriptions, depictions, and renderings are provided solely for illustrative purposes and are subject to change and should not be relied upon to confirm applicable features. All sales are subject to receipt and acceptance of the ADRE Public Report. All information including pricing, building and floor plan design, features, amenities, standards, and options are subject to change without notice. Dimensions are approximate and may vary due in part to construction variances and tolerances. Outdoor area includes planter(s). Polaris Pacific of Arizona, Inc ADRE# CO662390000. Optima Realty, Inc. ADRE# CO548458000.



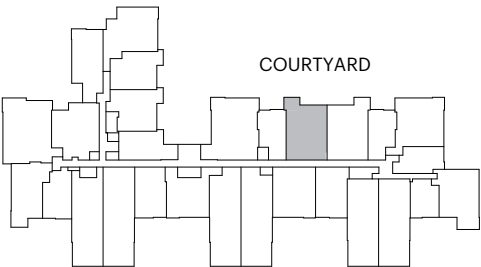
7230 UNIT 2B-01W

HOMES 2003-8003

2 BEDROOMS
2.5 BATHROOMS

RESIDENTIAL AREA
+/- 1,669 SF

OUTDOOR AREA
+/- 148 SF



EAST MAYO BOULEVARD